

# Key stage 1

## Phonics Screening Practice

Set 4

blurst



zoo

chom



cloud

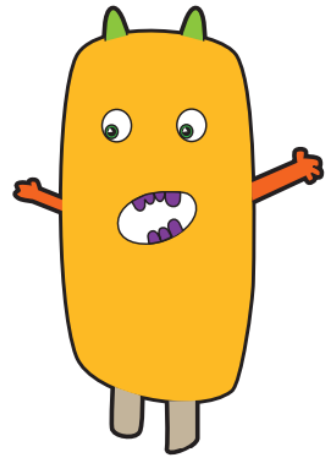
# Guidance

This document will help your child practice for the statutory phonics screening test.

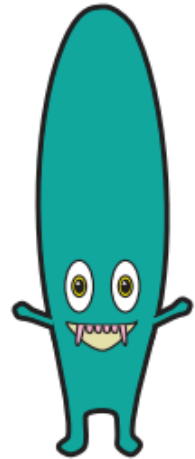
It contains a mixture of real words and pseudo-words (nonsense words), just like the real test they will take in school.

All pseudo-words are accompanied by a picture of an imaginary creature. This provides context for the child (naming the type of imaginary creature) to ensure that they are not trying to match the pseudo-word to a word in their vocabulary.

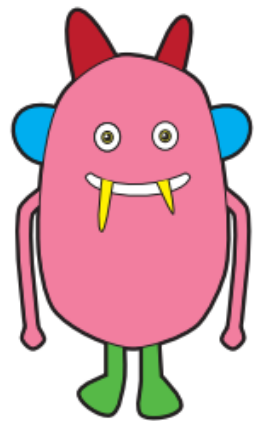
niff



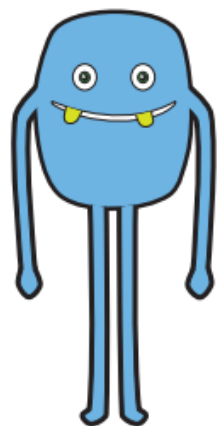
dass



pell



quazz



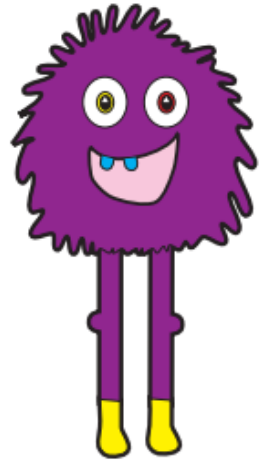
slow

heat

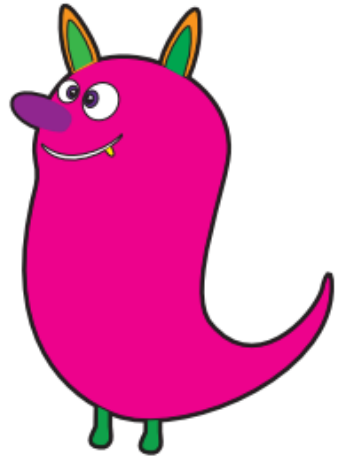
glue

foot

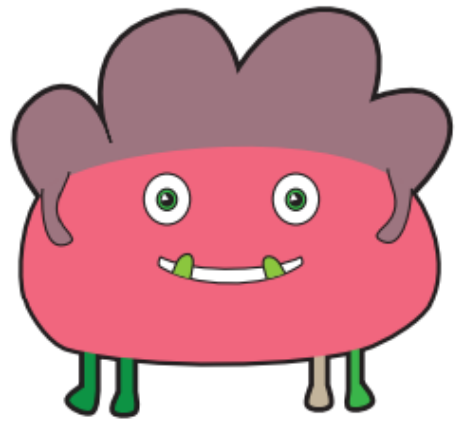
gick



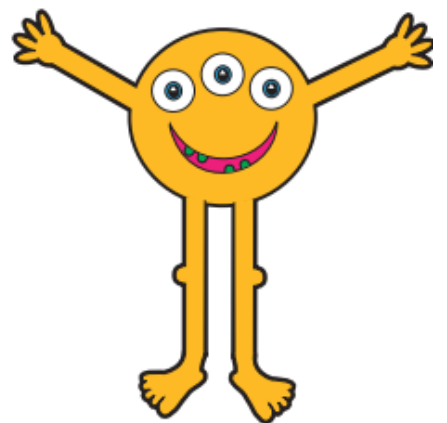
jenk



baip



weef



give

sore

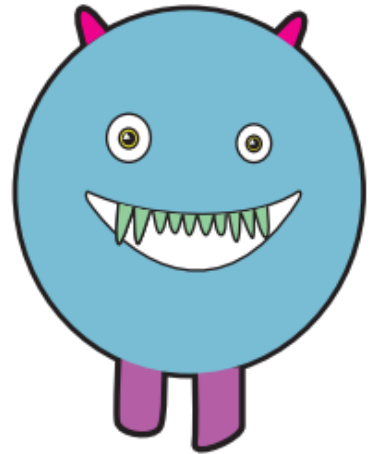
few

toes

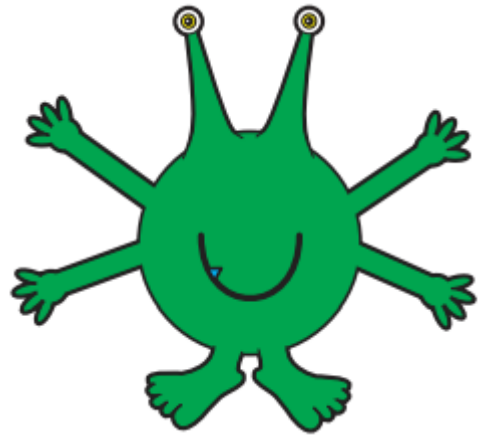
figh



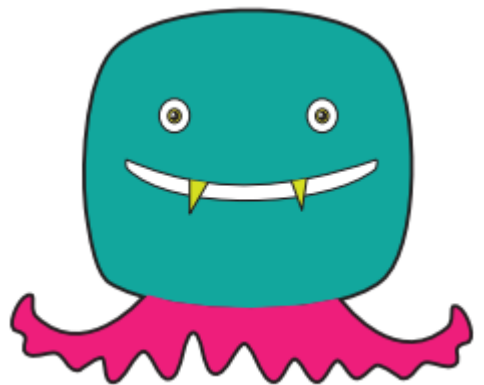
soam



moot



kay





*crown*

*ditch*

*head*

*tied*



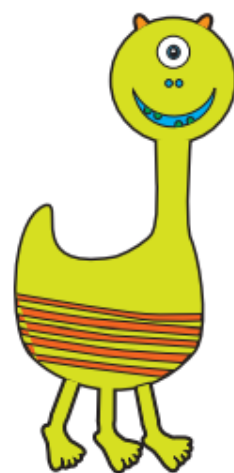
shabe



nairs



cribe



norst



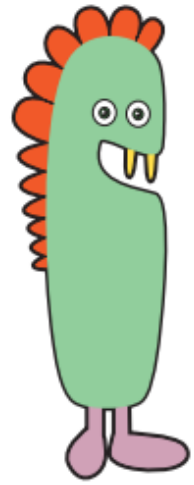
*paw*

*twenty*

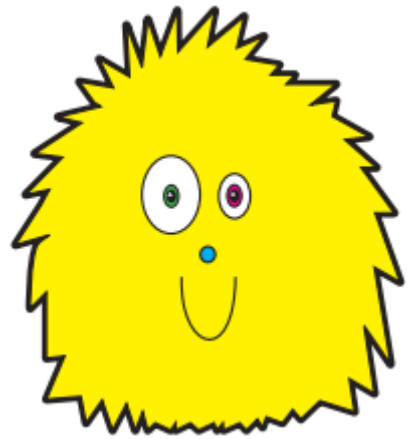
*loudest*

*belief*

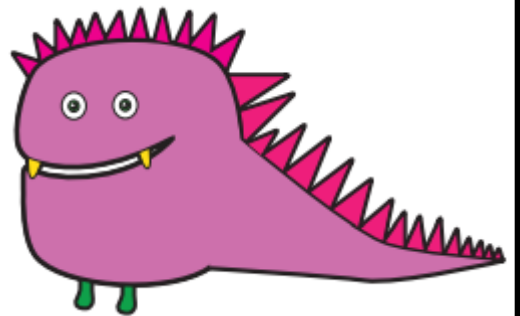
ploys



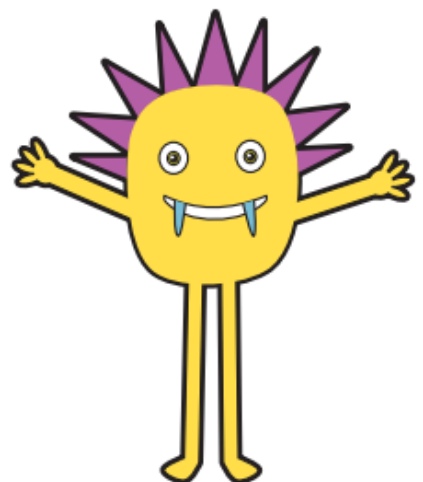
sloke



gutch



blard



*appear*

*include*

*better*

*person*



*Mr P's Resources*